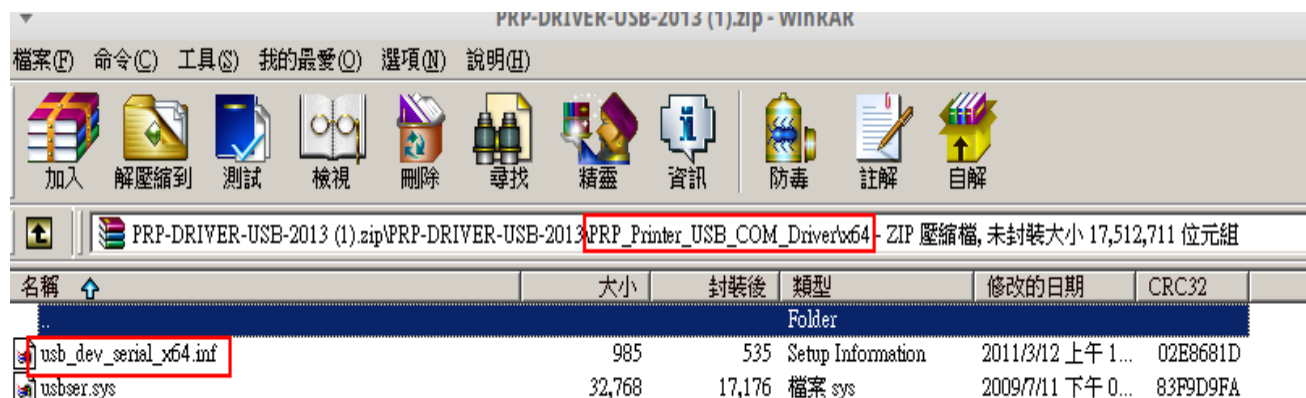
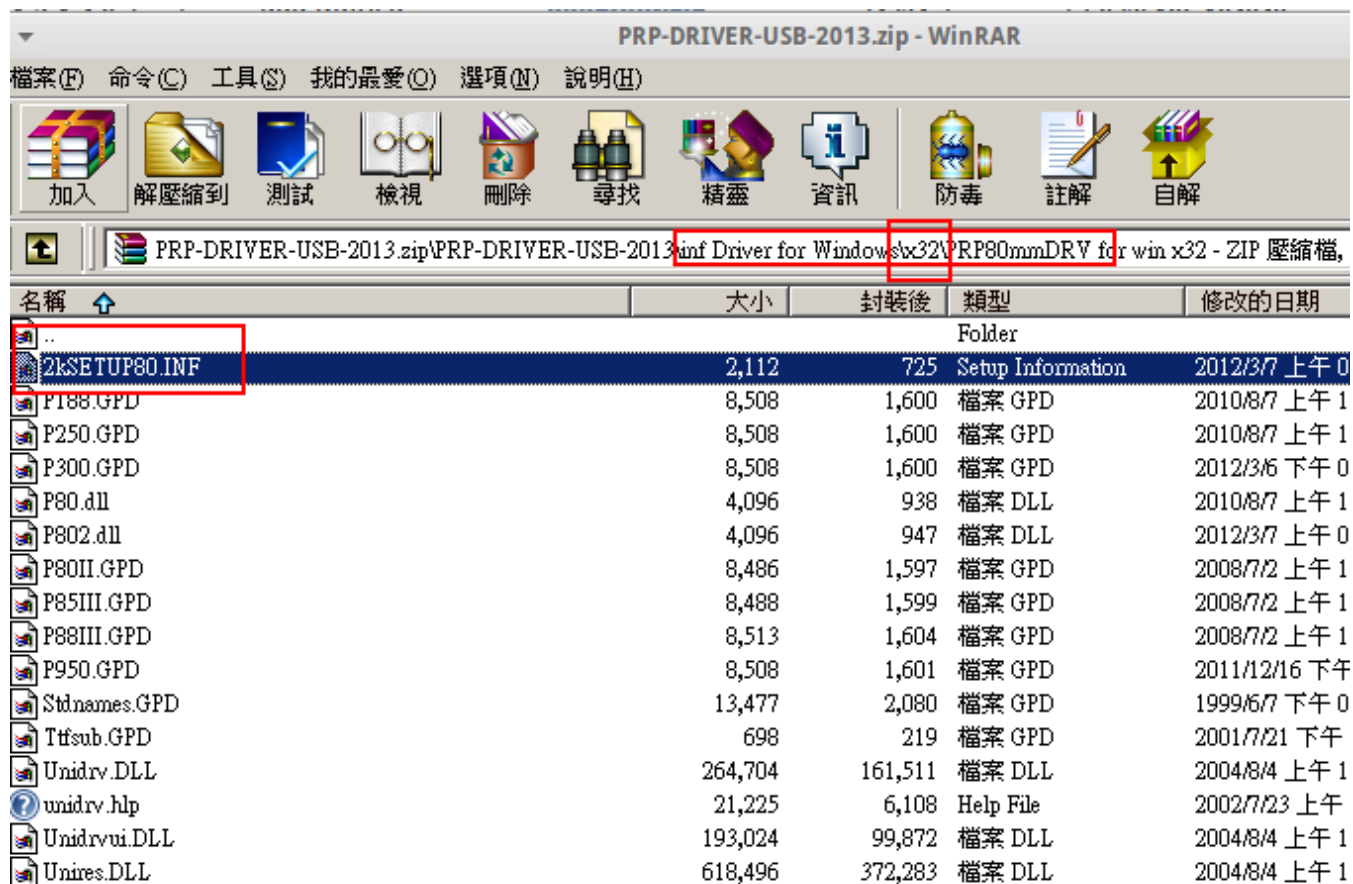


Windows 7 64 bit USB driver:



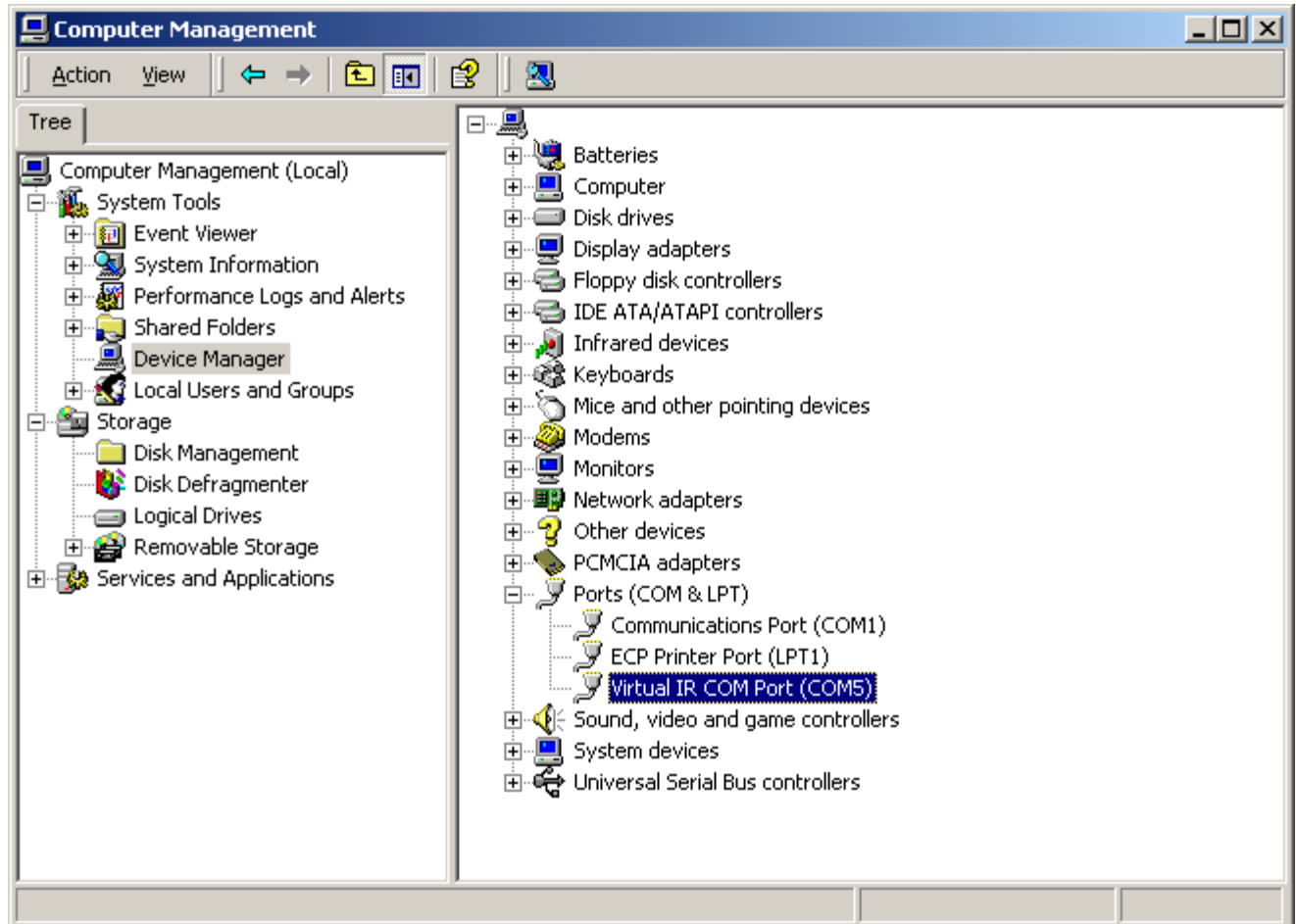
Windows XP/7 32 bit USB driver:



After USB is installed (need Administrator right to install above INF files) , power ON the printer and attach USB to PC

Then check your Windows Device Manager to see if the Virtual COM port (USB) has been assigned correctly or not?

Similar to this: could also be COM 7 or COM 9



And then remove the all the previous installed driver (v8) if any. ( go to control panel and software and remove program )



And reinstall v9 :



During printer installation you can choose either PRP-085 or PRP-188

After installed, go to the printer properties , ports :

